

**Illustrated Parts List  
26" RIDING MOWER  
SIDE DISCHARGE  
ELECTRIC START**

**WEEDEATER®**  
*One*



**Catalog No.  
WE261**

**IMPORTANT:**  
Read and follow all Safety  
Rules and Instructions before  
operating this equipment.

Patents Pending

**532 43 32-03 Rev. 9**

# TABLE OF CONTENTS

Warranty .....	2	Maintenance .....	16
Safety Rules .....	3	Service and Adjustments.....	20
Product Specifications.....	6	Storage.....	24
Assembly/Pre-Operation .....	7	Troubleshooting .....	25
Operation.....	10	Repair Parts.....	27
Maintenance Schedule.....	16		

## WARRANTY

### LIMITED WARRANTY

The Manufacturer warrants to the original consumer purchaser that this product as manufactured is free from defects in materials and workmanship. For a period of two (2) years from date of purchase by the original consumer purchaser, we will repair or replace, at our option, without charge for parts or labor incurred in replacing parts, any part which we find to be defective due to materials or workmanship. This Warranty is subject to the following limitations and exclusions.

1. This warranty does not apply to the engine, battery (except as noted below) or components parts thereof. Please refer to the applicable manufacturer's warranty on these items.
2. Transportation charges for the movement of any power equipment unit or attachment are the responsibility of the purchaser. Transportation charges for any parts submitted for replacement under this warranty must be paid by the purchaser unless such return is requested by the manufacturer.
3. Battery Warranty: On products equipped with a Battery, we will replace, without charge to you, any battery which we find to be defective in manufacture, during the first ninety (90) days of ownership. After ninety (90) days, we will exchange the Battery, charging you 1/12 of the price of a new Battery for each full month from the date of the original sale. Battery must be maintained in accordance with the instructions furnished.
4. The Warranty does not apply to any products used for rental or commercial purposes.
5. This Warranty applies only to products which have been properly assembled, adjusted, operated, and maintained in accordance with the instructions furnished. This Warranty does not apply to any product which has been subjected to alteration, misuse, abuse, improper assembly or installation, delivery damage, or to normal wear of the product.
6. Exclusions: Excluded from this Warranty are belts, blades, blade adapters, normal wear, normal adjustments, standard hardware and normal maintenance.
7. In the event you have a claim under this Warranty, you must return the product to an authorized service dealer.

Should you have any unanswered questions concerning this Warranty, please contact:

HOP  
Outdoor Products Customer Service Dept.  
9335 Harris Corners Parkway  
Charlotte, NC 28269 USA

In Canada contact:  
HOP  
5855 Terry Fox Way  
Mississauga, Ontario  
L5V 3E4

giving the model number, serial number and date of purchase of your product and the name and address of the authorized dealer from whom it was purchased.

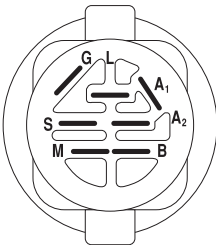
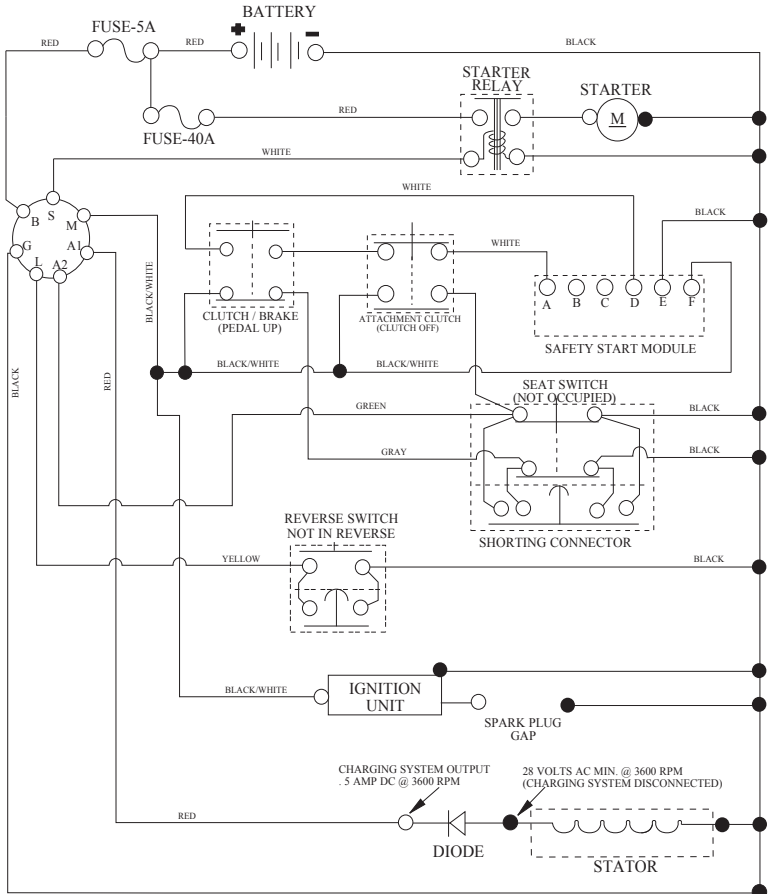
THIS WARRANTY DOES NOT APPLY TO INCIDENTAL OR CONSEQUENTIAL DAMAGES AND ANY IMPLIED WARRANTIES ARE LIMITED TO THE SAME TIME PERIODS STATED HEREIN FOR OUR EXPRESSED WARRANTIES. Some areas do not allow the limitation of consequential damages or limitations of how long an implied Warranty may last, so the above limitations or exclusions may not apply to you. This Warranty gives you specific legal rights, and you may have other rights which vary from locale to locale.

This is a limited Warranty within the meaning of that term as defined in the Magnuson-Moss Act of 1975.

# RIDING MOWER -- CATALOG NO. WE261

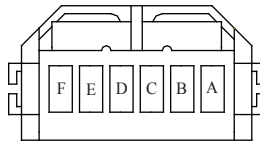
## SCHEMATIC

SCH21



IGNITION SWITCH

POSITION	CIRCUIT	"MAKE"
OFF	M+G+A1	
RUN/OVERRIDE	B+A1	
RUN	B+A1	L+A2
START	B+S+A1	



SAFETY START MODULE  
VIEWED FROM MATING SIDE

○  
REMOVABLE  
CONNECTIONS

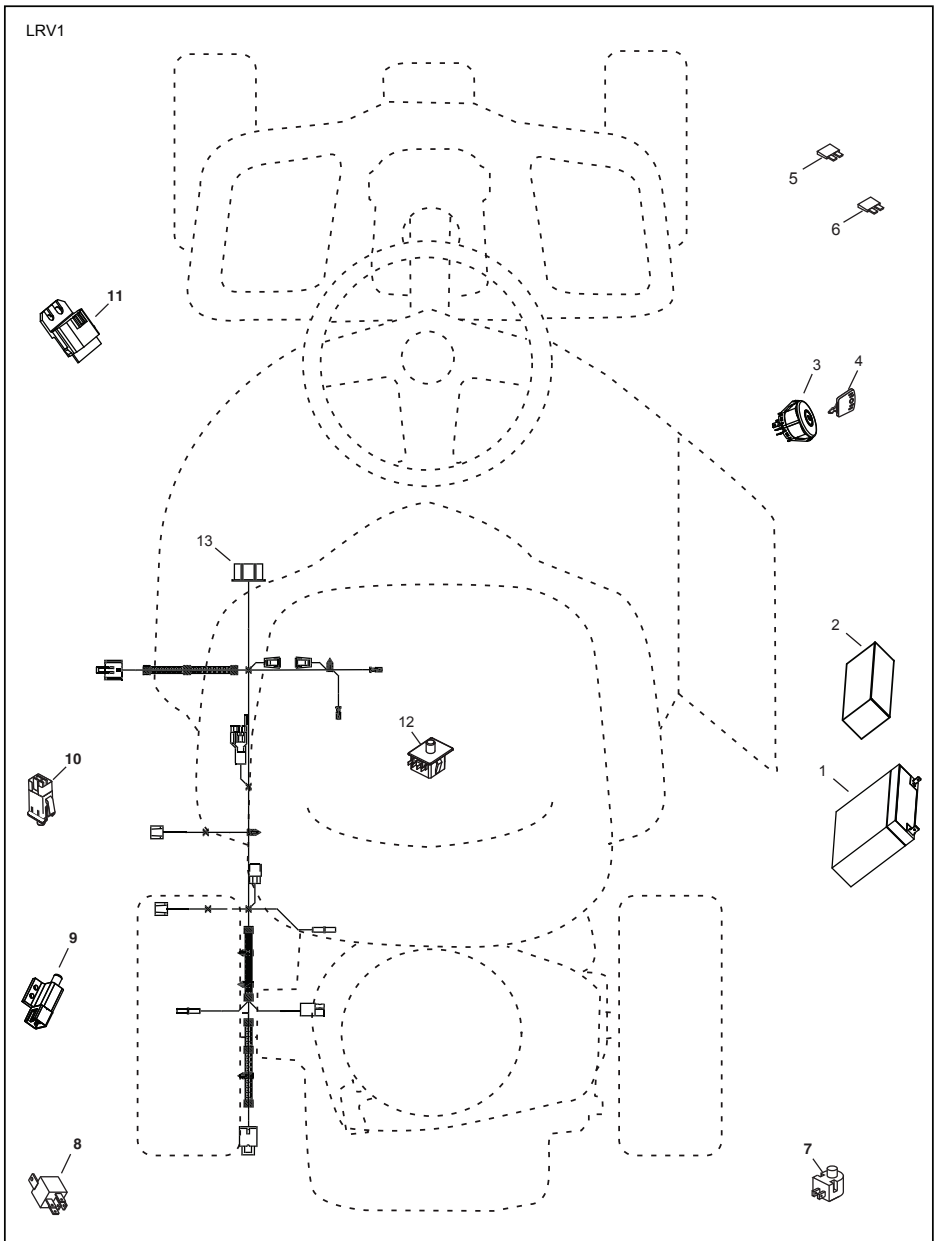
●  
NON-REMOVABLE  
CONNECTIONS

### WIRING INSULATED CLIPS

NOTE: IF WIRING INSULATED CLIPS WERE REMOVED FOR SERVICING OF UNIT, THEY SHOULD BE RE-INSTALLED TO PROPERLY SECURE YOUR WIRING.

# RIDING MOWER - -CATALOG NO. WE261

## ELECTRICAL

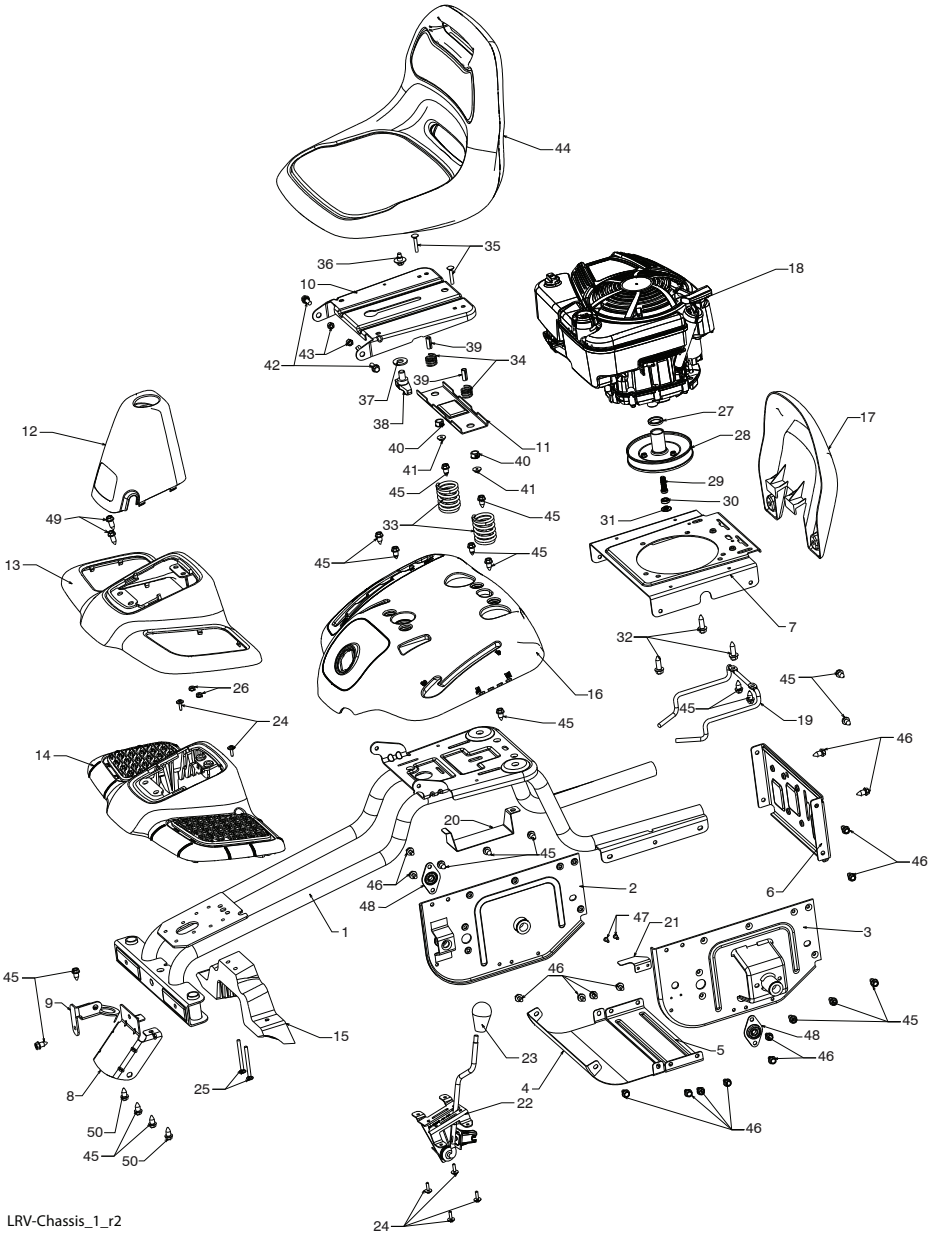


KEY NO.	PART NO.	DESCRIPTION
1	532 43 70-70	BATTERY
2	532 42 54-16	FOAM, POLYURETHANE
3	532 19 33-50	SWITCH, IGN, DLTA, P-IN, ROS
4	532 41 19-33	KEY, MOLDED ENGLISH/SPANISH
--	532 41 19-35	KEY, MOLDED ENGLISH/FRENCH/INTERNATIONAL
5	532 43 33-30	FUSE, 5A
6	532 42 59-37	FUSE, 40A
7	532 16 07-84	SWITCH, PLUNGER, NO, OLIVE
8	532 43 15-42	RELAY, 40A
9	532 10 95-53	SWITCH, INTLK,CL, MWR, GRY
10	532 17 61-38	SWITCH, INTERLOCK, NONC,GRAY
11	532 43 18-46	MODULE, STARTING, RECOIL, LRV
12	532 19 27-49	SWITCH, SEAT, DP, ROS
13	532 42 84-77	HARNES, IGN, ELECTSTART, LRV

**NOTE:** All component dimensions given in U.S. inches  
1 inch = 25.4 mm

# RIDING MOWER - -CATALOG NO. WE261

## CHASSIS



LRV-Chassis\_1\_r2

# RIDING MOWER - -CATALOG NO. WE261

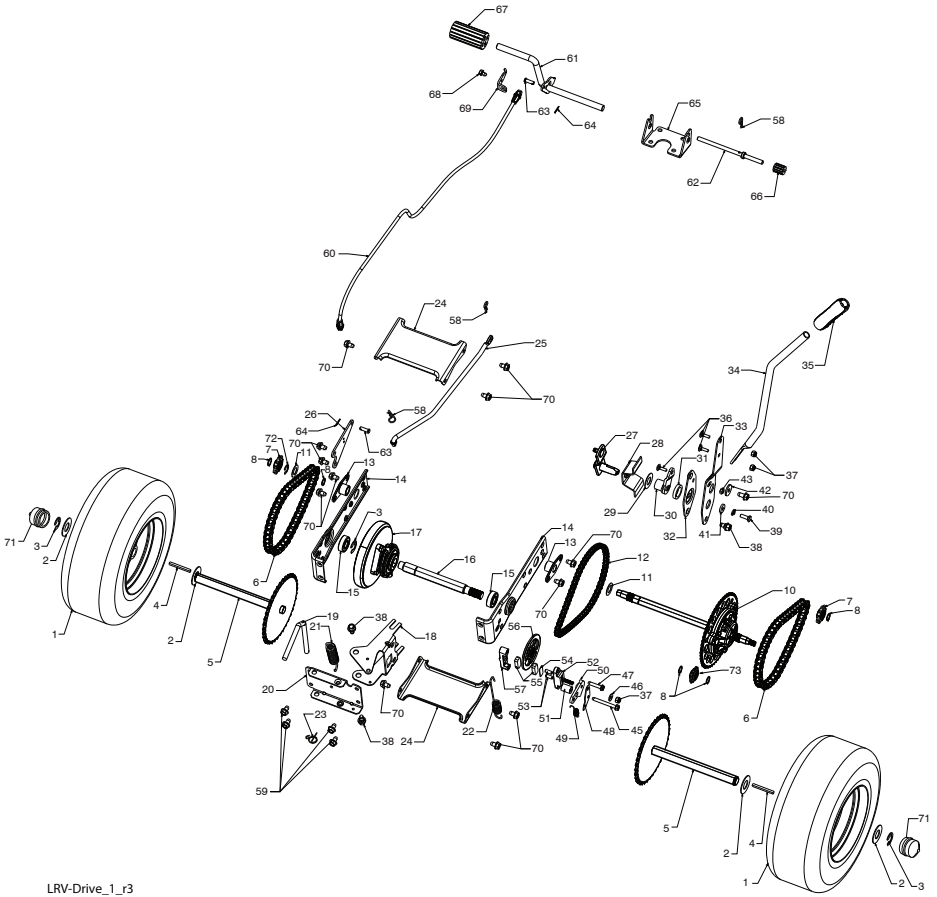
## CHASSIS

KEY NO.	PART NO.	DESCRIPTION
1	532 42 80-48	WELDMENT, CHASSIS
2	532 42 82-47	SUPPORT, AXEL LH
3	532 42 82-44	SUPPORT, AXEL RH
4	532 42 83-46	SHIELD, TRANSAXLE FRONT
5	532 42 81-10	BRACE, AXLE CROSS
6	532 42 81-09	COVER, FRICTION DRIVE
7	532 42 80-40	PLATE, ENGINE
8	532 42 85-76	BRACKET, CHASSIS FRONT
9	532 42 88-56	BRACKET, STEERING SUPPORT
10	532 19 55-30	PAN, SEAT
11	532 17 46-48	BRACKET, SWITCH MOUNTING
12	532 43 68-91	BOOT, DUST
13	532 43 64-96	COVER, FOOT REST
14	532 42 82-50	STRUCTURE, FOOT REST
15	532 42 82-49	SUPPORT, FOOT REST
16	532 43 64-97	FENDER, CONTROL
17	532 42 83-48	GUARD, ENGINE
18	532 42 80-47	ENGINE, (NON-CALIFORNIA) 12S907-1411-B1
--	532 43 23-89	ENGINE, (California) 121S07-1415-F1
--	532 43 56-74	ENGINE, (CANADA) 12S907-1463-B1
19	532 42 89-86	KEEPER, BELT
20	532 42 80-46	BRACKET, BATTERY
21	532 42 98-15	LEVER, SWITCH
22	532 42 88-26	DECK CLUTCH ASM
23	532 14 98-46	KNOB
24	532 41 63-58	SCREW, NO. 10
25	872 14 04-24	BOLT, CARRIAGE 1/4-20 X 3
26	873 51 04-00	NUT, 1/4-20
27	532 43 00-87	SPACER, ENGINE
28	532 42 83-01	DISC, FRICTION ASM
29	532 43 08-17	BOLT, SCKT HD 3/8-24 X 1 .25
30	532 43 04-70	BEARING
31	532 43 04-69	SPACER, NEUTRAL
32	532 15 04-06	BOLT, 3/8-16 X .280
33	532 12 41-81	SPRING, SEAT
34	532 12 12-50	SPRING
35	872 05 04-12	BOLT, 1/4-20 X 1 1/2
36	532 12 70-18	BOLT, SHOULDER
37	819 17 19-12	WASHER, 17/32 X 1 3/16
38	532 16 63-69	KNOB, SEAT
39	532 13 43-00	SPACER
40	532 12 12-48	BUSHING, NYLON SNAP
41	532 12 39-76	NUT, LOCK
42	532 17 18-52	BOLT, 5/16-18 SHOULDER
43	873 80 05-00	NUT, 5/16-18
44	532 42 82-43	SEAT
45	817 00 05-12	BOLT, 5/16-18 X 3/4
46	817 49 05-08	BOLT, 5/16-18 X 1/2
47	532 08 67-77	SCREW
48	532 40 89-81	BEARING, FLANGE, BALL
49	817 06 05-16	SCREW, 5/16-18 X1
50	532 16 54-92	Bolt, Shoulder, 5/16-18 x .561

**NOTE:** All component dimensions given in U.S. inches  
1 inch = 25.4 mm

# RIDING MOWER - -CATALOG NO. WE261

## DRIVE



LRV-Drive\_1\_r3



# RIDING MOWER - -CATALOG NO. WE261

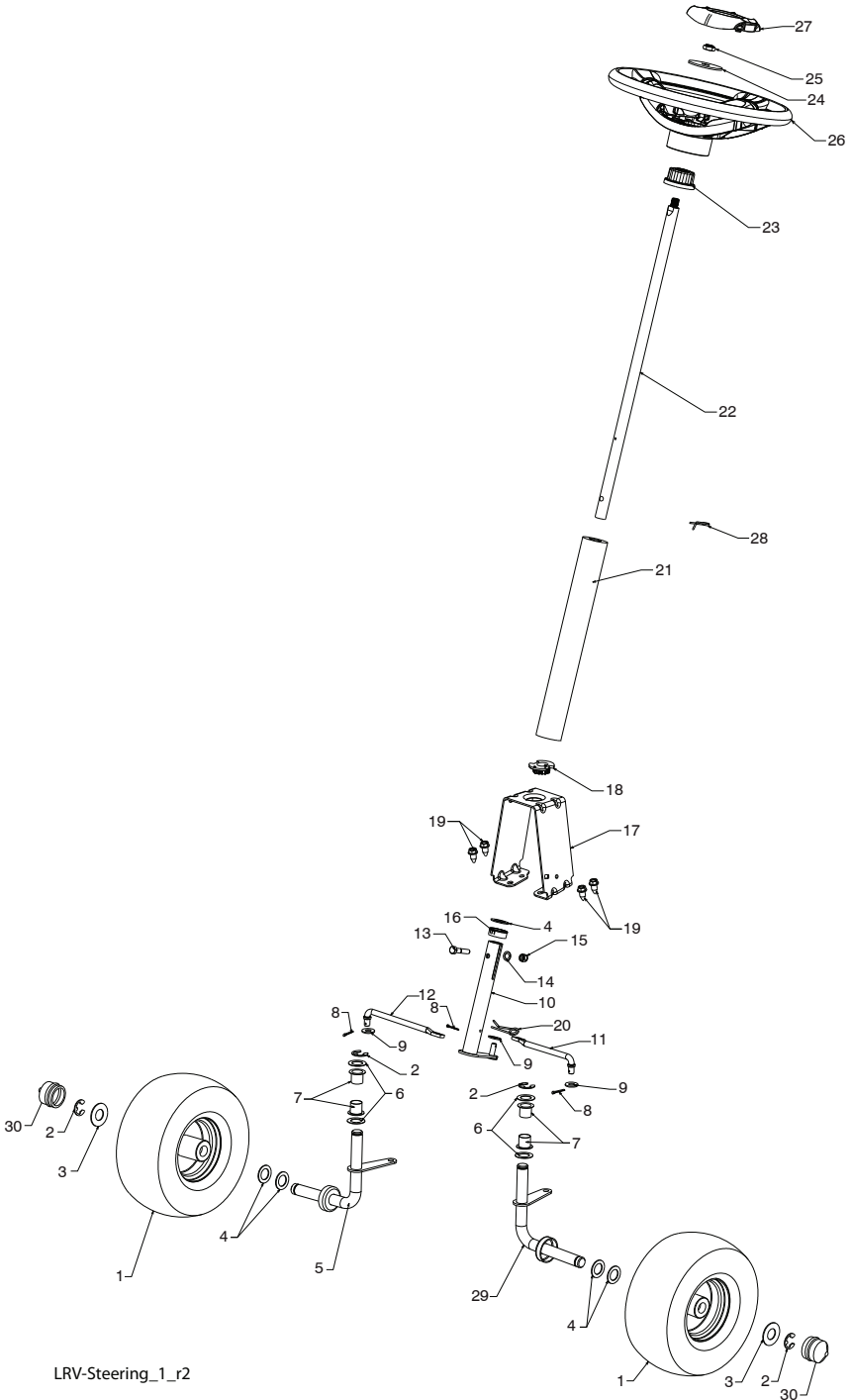
## DRIVE

KEY NO.	PART NO.	DESCRIPTION	KEY NO.	PART NO.	DESCRIPTION
--	532 43 61-44	SERVICE KIT, TRANSAXLE	39	874 78 04-12	BOLT, 1/4-20 X 3/4
1	532 43 64-98	WHEEL ASM (REAR)	40	810 04 04-00	WASHER, LOCK
2	532 12 17-48	WASHER, 16 GA.	41	819 09 12-10	WASHER FLAT
3	812 00 00-01	E-CLIP	42	532 16 60-02	WASHER, SERRATED
4	532 12 35-83	KEY, SQUARE	43	873 68 04-00	NUT, CROWN LOCK 114-20
5	532 42 79-39	WELDMENT, DRIVE AXLE	45	817 49 04-36	SCREW 1/4-20 X 2 114
6	532 42 80-69	CHAIN DRIVE	46	819 09 10-16	WASHER
7	532 42 78-73	SPROCKET, 9 TOOTH SPLINED	47	817 49 04-20	SCREW, 1/4-20 X 1 1/2
8	812 10 00-09	RING, SNAP	48	532 43 02-49	PLATE BRAKE ANTI - ROTATE
10	532 42 88-76	DIFFERENTIAL ASM	49	532 43 02-45	SPRING, BRAKE RETURN
11	532 00 13-70	WASHER, THRUST	50	532 42 80-21	ARM, BRAKE
12	532 43 06-45	CHAIN, PRIMARY DRIVE	51	532 43 02-47	SPACER RETURN
13	532 43 08-45	BUSHING	52	532 42 80-78	CALIPER, BRAKE ASM
14	532 42 79-46	BRACKET, CARRIER	53	877 01 08-10	PIN, DOWEL 1/4
15	532 12 47-93	BEARING ASM	54	532 42 80-19	PLATE, BRAKE PAD
16	532 42 79-26	SHAFT INPUT	55	532 42 80-17	PUCK BRAKE
17	532 42 81-06	WHEEL, FRICTION A5M	56	532 43 52-53	ROTOR, BRAKE
18	532 42 47-59	ARM, SHIFT	57	532 42 80-16	CAP, BRAKE CALIPER
19	532 43 08-70	ROD, BYPASS	58	532 12 47-88	PIN, RETAINER
20	532 42 79-97	BRACE CARRIER REAR	59	817 49 05-08	BOLT, 5/16-16 X 112
21	532 42 80-77	SPRING, CARRIER	60	532 42 84-60	CABLE, BRAKE
22	532 42 80-76	SPRING, BRAKE	61	532 42 79-45	WELDMENT, PEDAL
23	532 43 13-74	SPRING, BYPASS	62	532 42 96-78	ROD, PARKING BRAKE
24	532 42 79-95	BRACE CARRIER BOX	63	877 10 08-12	PIN, .25 X .75 CLEVIS
25	532 42 83-03	LINK, SHIFT	64	876 02 02-08	PIN, 1/16 DIA. COTTER
26	532 42 98-16	ARM, CLUTCH	65	532 42 93-25	BRACKET, BRAKE SUPPORT
27	532 42 90-53	WELDMENT SHIFT LEVER	66	532 42 96-94	COVER PEDAL
28	532 42 83-02	SUPPORT, SHIFT LEVER	67	532 42 96-93	COVER, BRAKE PEDAL
29	532 17 48-40	WASHER, NYLON	68	817 49 04-06	SCREW, 1/4-20 X 3/8
30	532 18 39-00	HUB SHIFT LEVER	69	532 42 80-70	BRAKE CABLE MOUNT
31	532 42 90-55	SPACER, NYLON	70	817 00 05-12	BOLT, 5/16-18 X 3/4
32	532 42 84-64	MNTG BRKT. SHIFT ARM	71	532 43 64-99	CAP HUB AXLE
33	532 42 84-61	BRACKET, SHIFTER FLEX	72	812 00 00-02	E RING #5133-62
34	532 42 84-62	TUBE SHIFT ARM	73	532 42 95-19	SPROCKET II TOOTH SPLINED
35	532 19 64-92	GRIP, HANDLE			
36	872 11 04-06	BOLT, CARRIAGE - 114-20X3/4			
37	873 80 04-00	NUT NYLON LOCK 114-20			
38	532 16 54-92	BOLT, SHOULDER			

**NOTE:** All component dimensions given in U.S. inches  
1 inch = 25.4 mm

# RIDING MOWER - -CATALOG NO. WE261

## STEERING



LRV-Steering\_1\_r2

# RIDING MOWER - -CATALOG NO. WE261

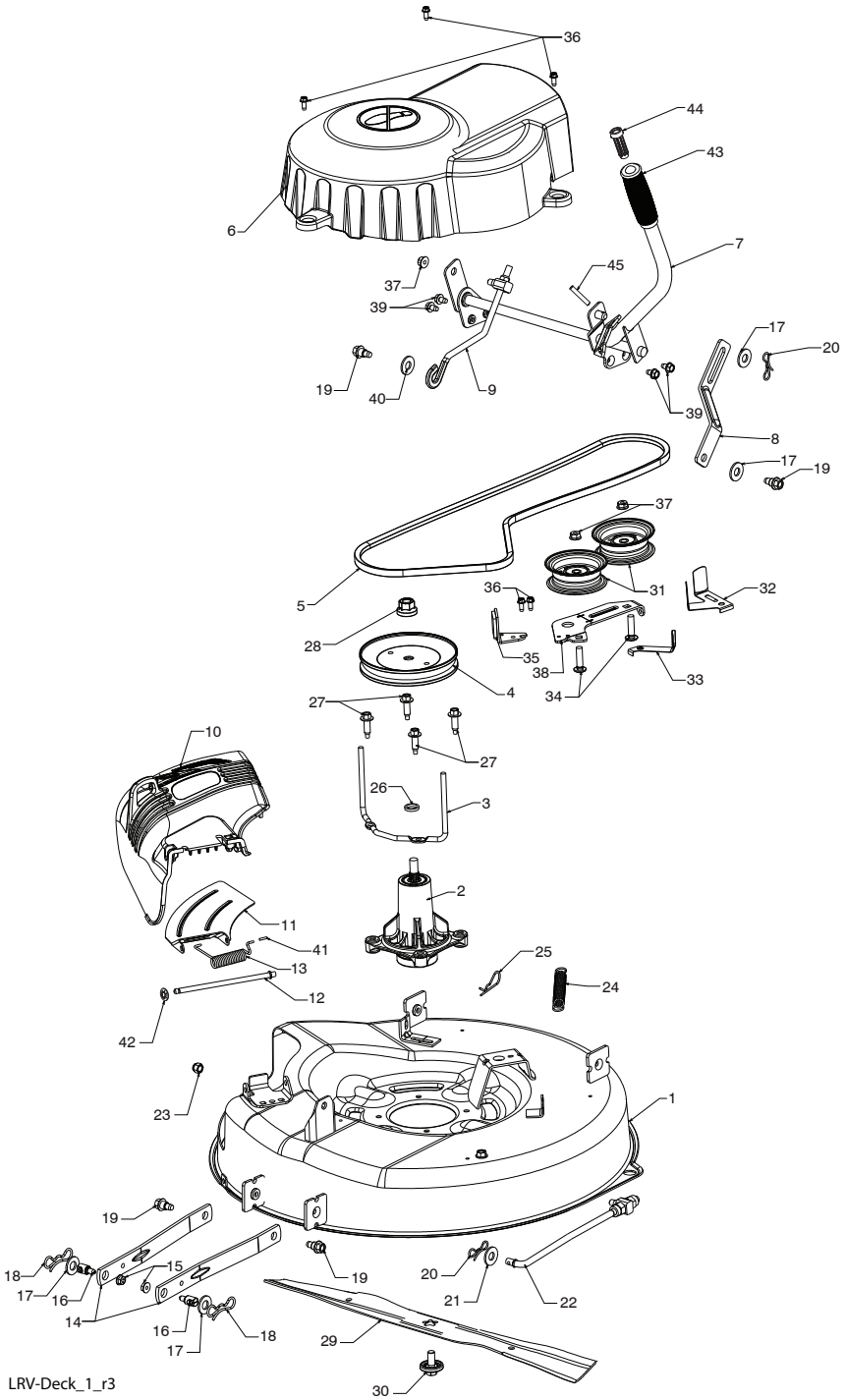
## STEERING

KEY NO.	PART NO.	DESCRIPTION
1	532 43 65-00	WHEEL ASM (FRONT)
2	812 00 00-01	E-CLIP
3	532 18 89-67	WASHER, HARDENED
4	532 12 17-49	WASHER, 1/4 X 3/4
5	532 42 80-34	SPINDLE, RH
6	532 12 49-31	WASHER, HARDENED THRUST
7	532 12 49-37	BUSHING, STEERING COLUMN
8	532 42 10-76	PIN, 5/64 X 3/4 COTTER
9	819 13 14-14	WASHER
10	532 42 80-57	WELDMENT, LWR STRG SHAFT
11	532 42 80-35	LINK, STRNG LH
12	532 42 80-36	LINK, STRNG RH
13	874 78 05-24	BOLT, 5/16-18 X 1 1/2
14	819 13 10-16	WASHER
15	873 80 05-00	NUT, 5/16-18
16	532 42 80-44	BUSHING, STEERING SNAP
17	532 42 82-52	SUPPORT, UPPER STEERING
18	532 19 52-27	BUSHING, UPPER STEERING
19	817 00 05-12	BOLT, 5/16-18 X 3/4
20	532 42 80-45	CLIP, RETAINER SPRING
21	532 42 83-47	COVER, STEERING COLUMN
22	532 42 82-13	SHAFT, STEERING
23	532 18 67-37	ADAPTER, STEERING WHEEL
24	819 18 38-12	WASHER, 9/16 X 2 3/8 12 GA.
25	873 94 08-00	NUT, JAM LOCK 1/2-20
26	532 43 65-01	WHEEL, STEERING
27	532 43 65-02	CAP, STEERING WHEEL
28	532 19 98-49	CLIP, RETAINER SPRING
29	532 42 80-33	SPINDLE, LH
30	532 43 64-99	CAP, HUB, AXLE

**NOTE:** All component dimensions given in U.S. inches  
1 inch = 25.4 mm

MOWER DECK

RIDING MOWER - -CATALOG NO. WE261



LRV-Deck\_1\_r3

# RIDING MOWER - -CATALOG NO. WE261

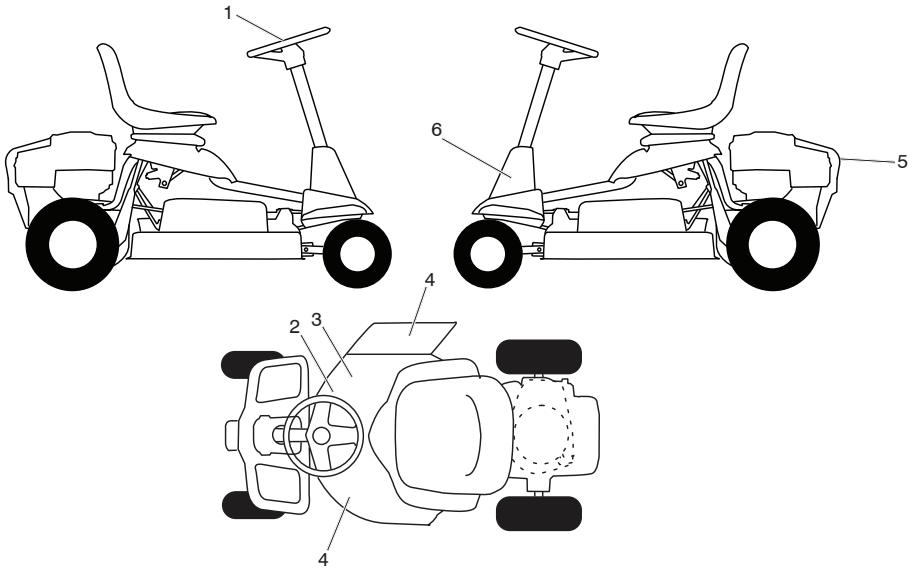
## MOWER DECK

KEY NO.	PART NO.	DESCRIPTION
1	532 42 81-93	DECK, 26"
2	532 19 28-70	MANDREL ASM
3	532 43 25-20	KEEPER, BELT
4	532 43 25-94	PULLEY, MANDREL
5	532 42 85-78	BELT
6	532 42 82-42	COVER, MANDREL
7	532 42 93-95	LIFT ASM, DECK
8	532 42 91-95	LINK, DECK LIFT
9	532 42 93-97	LINK, ADJUSTABLE
10	532 42 81-46	DEFLECTOR
11	532 42 89-68	SUPPORT, DEFLECTOR
12	532 13 14-91	ROD, HINGE
13	532 19 70-26	SPRING, TORSION
14	532 41 88-63	ARM, MOWER SUPPORT
15	873 90 05-00	NUT, LOCK
16	532 19 51-61	STUD
17	819 19 19-12	WASHER
18	532 19 42-09	PIN
19	532 19 65-39	BOLT, SHOULDER
20	532 19 42-08	PIN
21	819 17 19-12	WASHER, 17/32 X 1 3/16
22	532 42 93-50	LINK, DECK
23	873 93 06-00	NUT, LCK 3/8-16
24	532 42 95-31	SPRING, DECK
25	532 12 47-88	PIN
26	532 18 76-90	SPACER, MANDREL
27	532 17 39-84	BOLT, MANDREL
28	532 40 02-34	NUT, LOCK
29	532 42 85-00	BLADE
30	532 19 30-03	BOLT, BLADE
31	532 19 31-97	PULLEY, IDLER
32	532 14 10-43	GUARD, IDLER
33	532 19 34-14	KEEPER, BELT IDLER
34	872 11 06-12	BOLT, 3/8-16 X 1 1/2
35	532 19 94-70	ARM, BRAKE
36	532 13 77-29	SCREW, 1/4-20 X 5/8
37	873 90 06-00	NUT, 3/8-16 FLANGE
38	532 42 84-35	ARM, IDLER
39	817 49 05-08	BOLT, 5/16-18 X 1/2
40	819 17 16-16	WASHER, 16 GA.
41	532 10 53-04	CAP, SLEEVE
42	532 11 04-52	NUT, PUSH
43	532 12 56-31	GRIP, HANDLE
44	532 42 94-01	PLUNGER
45	532 10 57-67	PIN

**NOTE:** All component dimensions given in U.S. inches  
1 inch = 25.4 mm

# RIDING MOWER - -CATALOG NO. WE261

## DECALS

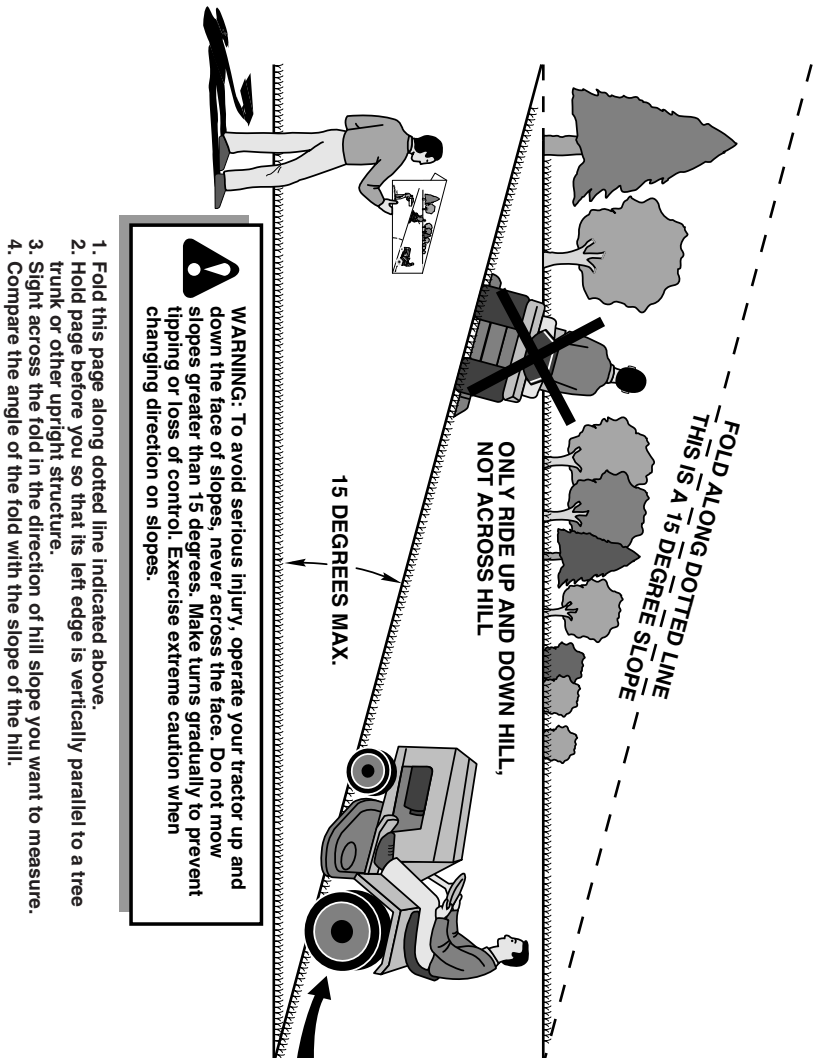


### KEY PART NO. NO.

KEY PART NO.	NO.	DESCRIPTION
1	532 43 05-88	DECAL, STEERING WHEEL
2	532 43 35-96	DECAL, V-BELT SCH 30"
3	532 42 51-13	DECAL, WARN. DEFLECT/CTFGR
4	532 43 05-89	DECAL, DECK/DEFLECTOR
5	532 43 44-57	DECAL, WARNING ENGINEGUARD
6	532 43 53-48	DECAL, STRBRCKT INSTALL BOOT
--	532 43 24-79	DECAL, BYPASS
--	532 43 32-03	MANUAL OPERATOR ENGLISH
--	532 43 36-32	MANUAL OPERATOR SPANISH
--	532 43 36-33	MANUAL OPERATOR FRENCH
--	532 43 68-68	MANUAL OPERATOR PORTUGUESE

**NOTE:** All component dimensions given in U.S. inches  
1 inch = 25.4 mm

## SUGGESTED GUIDE FOR SIGHTING SLOPES FOR SAFE OPERATION



# **WEEDEATER®** *One*

## **PARTS AND SERVICE**

This product has been expertly engineered and carefully manufactured to rigid quality standards. As with all mechanical products, some adjustments or part replacement may be necessary during the life of your unit.

For Parts and service, contact our authorized distributor: call 1-800-849-1297

- For replacement parts, have available the following information:
  - a. Model Number/Manufacturer's I.D. Number
  - b. Description of part.

For Technical Assistance: call 1-800-829-5886

For a Parts Manual, go to our website: [www.weedeater.com](http://www.weedeater.com)

**NOTE:** HOP provides parts and service through its authorized distributors and dealers; therefore, all requests for parts and service should be directed to your local dealer(s). The philosophy of HOP is to continually improve all of its products. If the operating characteristics or the appearance of your product differs from those described in this Manual, please contact your local dealer for updated information and assistance.